









A charming late-Victorian home, believed to date from circa 1890, this beautifully presented property has been comprehensively renovated in recent years to an exacting standard. Situated on Whyke Lane, it enjoys a highly convenient location within comfortable walking distance of the city centre, with its wide range of amenities and excellent transport links.

- Terraced Victorian house
- Beautifully presented
- City centre location
- Two double bedrooms
- Modern fitted kitchen
- Character features retained
  - Log burner fireplace
  - En-suite to master
- Landscaped rear garden
  - Rear access



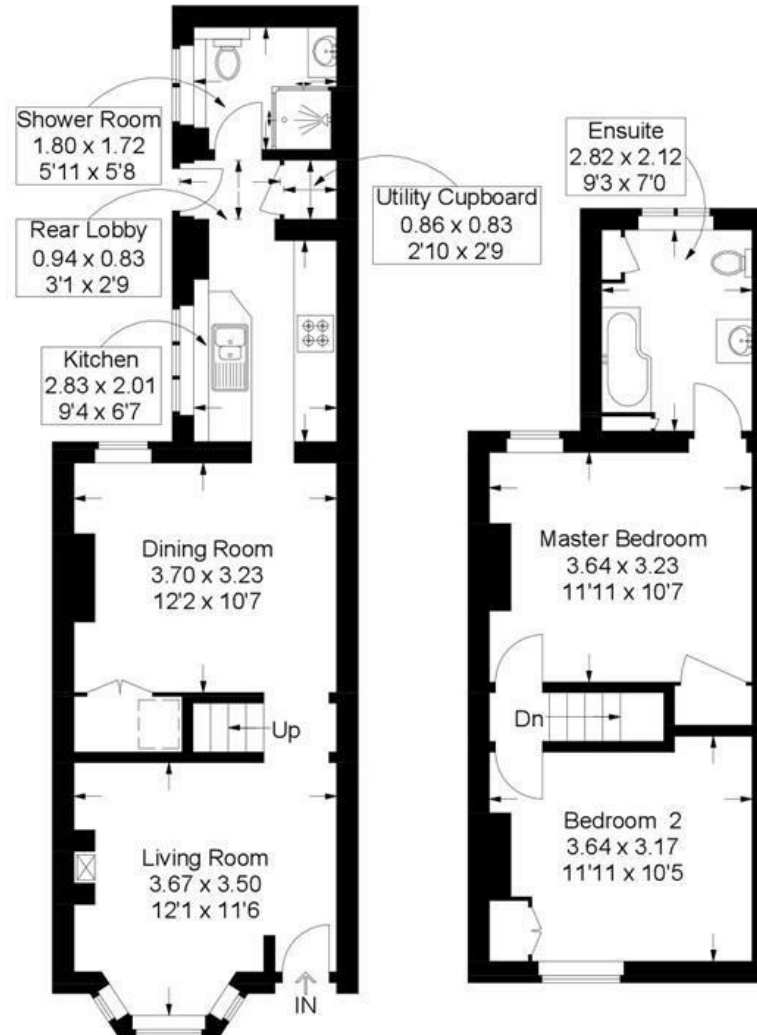
# Whyke Lane, Chichester

Approximate Gross Internal Area = 72.6 sq m / 782 sq ft

(Excluding Reduced Headroom / Eaves)

Reduced Headroom = 0.4 sq m / 4 sq ft

Total = 73 sq m / 786 sq ft



Ground Floor

First Floor

 = Reduced headroom below 1.5m / 5'0

This plan is for layout guidance only. Not drawn to scale unless stated. Windows and door openings are approximate. Whilst every care is taken in the preparation of this plan, please check all dimensions, shapes and compass bearings before making any decisions reliant upon them.